

# **The Gateway Greenhouse Education Center**

**A pre-trip planner for educators**

**Note: The following slide presentation has links to world wide web resources that can be reached with a click of the mouse and help you prepare your class for a visit. From the web sites selected for this slide program you can link to even more detailed sites. Use back arrow on top menu to return to slideshow.**

**Slide “zipper” on right to change slides.**

**Friends of Gateway – 232 E 11 Street, NY NY 10003 – 212-228-3126**

# The Gateway Greenhouse Education Center

A Pre-trip  
Planner

Friends of Gateway

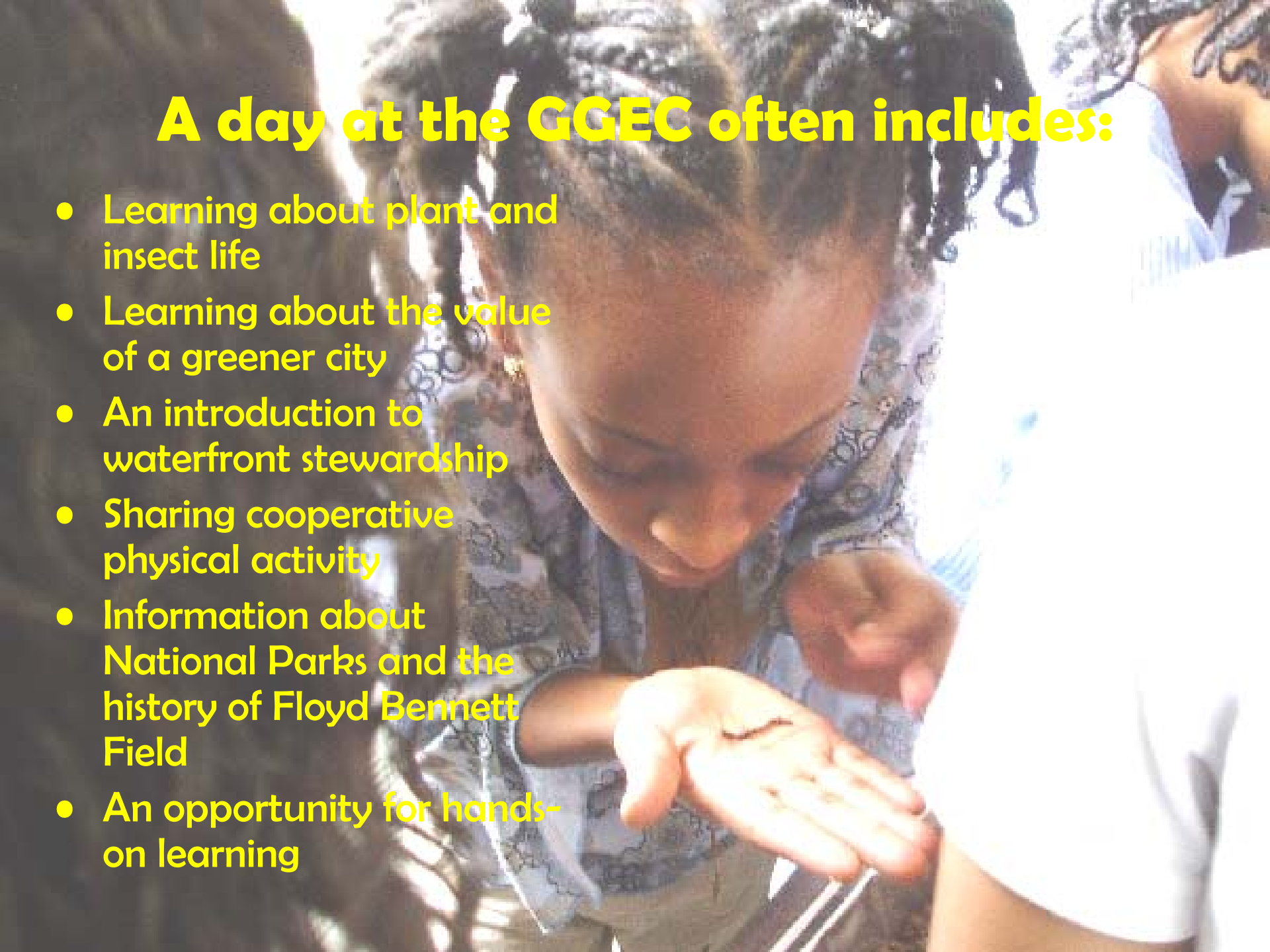
[www.treebranch.net/  
FoG Gateway Gree  
nhse.htm](http://www.treebranch.net/FoG_Gateway_Greenhouse.htm)

[www.treebranch.net](http://www.treebranch.net)



# A day at the GGEC often includes:

- Learning about plant and insect life
- Learning about the value of a greener city
- An introduction to waterfront stewardship
- Sharing cooperative physical activity
- Information about National Parks and the history of Floyd Bennett Field
- An opportunity for hands-on learning



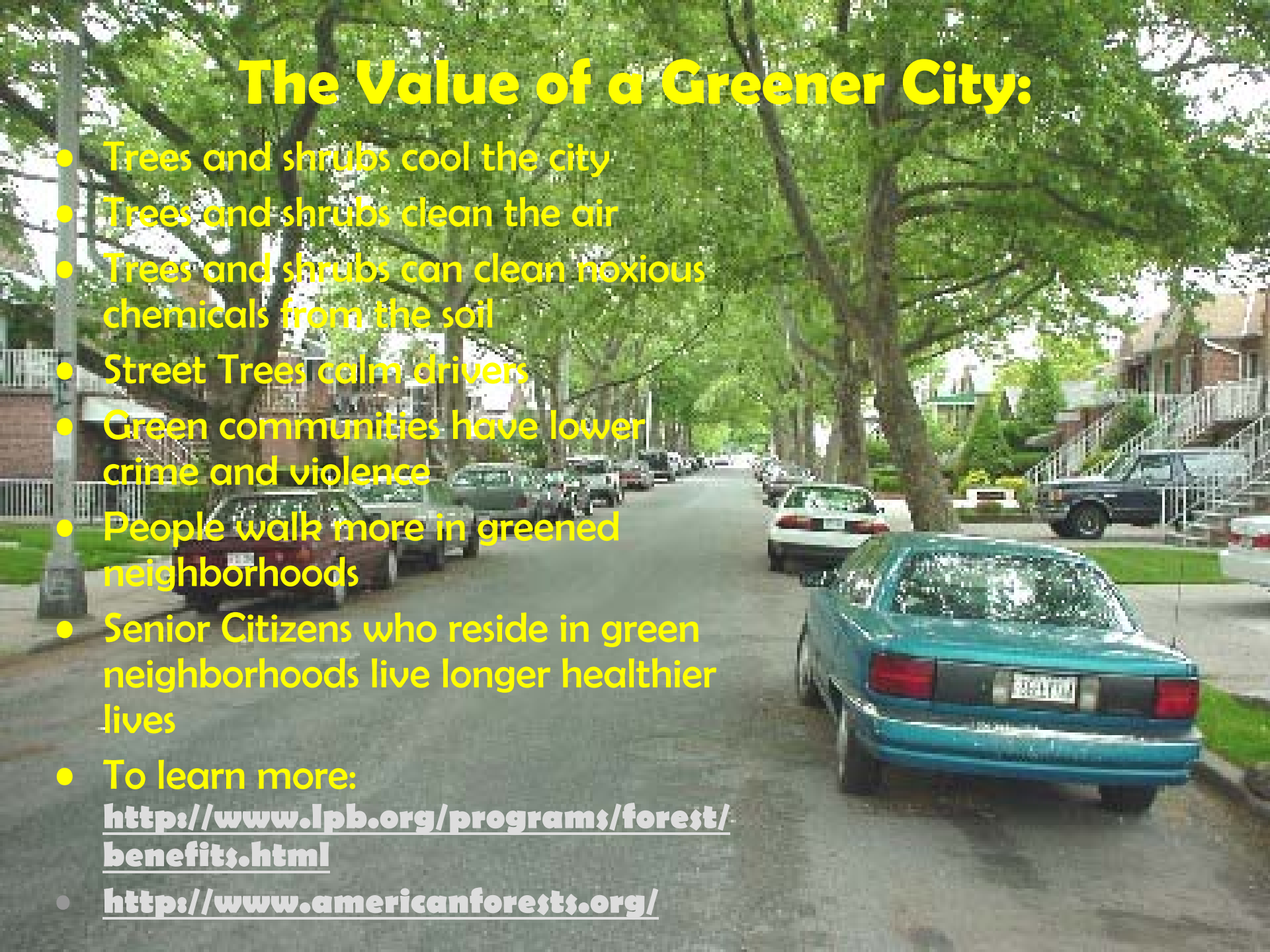
# Learning about Plant Life:

- Trees have roots, trunks and leaves
- Each serves a purpose
- Tree seedlings grow from seeds
- They grow slowly into full size trees
  
- Link for more information:
- [http://www1.br.cc.va.us/murray/Arboriculture/TreeCare101/above\\_ground/tree\\_biology.htm](http://www1.br.cc.va.us/murray/Arboriculture/TreeCare101/above_ground/tree_biology.htm)



# The Value of a Greener City:

- Trees and shrubs cool the city
- Trees and shrubs clean the air
- Trees and shrubs can clean noxious chemicals from the soil
- Street Trees calm drivers
- Green communities have lower crime and violence
- People walk more in greened neighborhoods
- Senior Citizens who reside in green neighborhoods live longer healthier lives
- To learn more:  
<http://www.lpb.org/programs/forest/benefits.html>  
<http://www.americanforests.org/>



# About Waterfront Stewardship:

- NYC's Waterfront long used for industry and waste.
- Sewers still empty to our waterways after storms.
- Sewers carry solid and liquid pollution.
- Cleanup starts in the neighborhood.
- Some Resources:  
<http://www.nycswcd.net/>
- <http://www.nyc.gov/html/dep/html/educatio.html>



# Sharing non-competitive physical activity:

- <http://www.cdc.gov/nccdphp/sgr/sgr.htm>
- <http://www.obesity.org/subs/childhood/>
- <http://www.som.tulane.edu/cardiohealth/supkid.htm>



# Hands-on Learning at the Gateway Greenhouse looks like this





# The Gateway Greenhouse is alive and well all winter:

- We have a full suite of classrooms and indoor activities.
- The greenhouse provides a learning experience in a natural light environment.
- Outdoor physical activity burns calories and improves attentiveness in all seasons.

<http://www.cnn.com/TECH/9606/06/daylight.school/>

<http://researchmag.asu.edu/articles/gymclass.html>

<http://www.cyh.com/HealthTopics/HealthTopicDetails.aspx?p=114&np=301&id=1977>



# About Floyd Bennett Field:

- Part of Gateway National Recreation Area
- A cradle of aviation
- A proud role in World War II
- Now Brooklyn's largest park
- [http://www.treebranch.net/friends\\_of\\_gateway.htm](http://www.treebranch.net/friends_of_gateway.htm),
- <http://www.nps.gov/gate/>,
- <http://www.anywho.com/cgi-bin/websearch?cmd=qry&qry=floyd+bennett+field>,
- <http://www.er.nps.gov/nr/twhp/wwwlps/lessons/12ofloyd/index.htm>

# What to bring:

- 
- A group of four children are kneeling on a dirt bank, engaged in planting small green seedlings into black plastic pots. They are wearing gloves and using small tools. The background is a lush green field of tall grasses. The scene is bright and sunny.
- Lunch
  - Clothes that can get dirty and cover arms and legs
  - Sunscreen in Season
  - Happy students

# Something you can bring home...

- Classes can bring a tree back on each school bus for planting in schoolyards, community gardens or local parks.



# How to get there by school bus:



- **From Southern Brooklyn, Downtown Brooklyn and bridges to Manhattan:** Take the Brooklyn Queens Expressway and Gowanus Expressway to the Shore Parkway. School Buses use the Shore Parkway from this direction only. Leave Shore Parkway at Flatbush Avenue in the direction of the Marine Parkway/ Gil Hodges Bridge. Floyd Bennett Field is the last left before the Bridge toll. The Gateway Greenhouse is at the end of the entrance Road just past the Environmental Study Center.
- **From the South Shore of Queens and Central Brooklyn:** Take Rockaway Blvd, or Conduit Blvd to Cross Bay Blvd. Take Cross bay to Linden Blvd. Take Linden to Pennsylvania Ave. to Flatlands Ave to Flatbush Ave. Follow Flatbush Ave to Floyd Bennett.

# Friends of Gateway Supporters

- **Sponsors:** The J.M. Kaplan Fund, National Park Service, Newman's Own Foundation, NYC Environmental Fund, NYC Soil and Water Conservation District, NY Community Trust, NYS Department of Environmental Conservation.
- **Supporters:** American Forests, Arizona Beverages, Brennan Tree Service, Brooklyn Brewery, Common Cents New York, Con Edison, Cornell Cooperative Extension, Dragonetti Brothers Landscaping, Elizabeth B Gilmore, Greenleaf Landscaping, Home Depot, International Kayak Fishing Association, International Paper, JPMorgan Chase Bank, James C. Cahill Landscaping, Joseph Locasano Landscaping, Home Depot, Kings Plaza Mall, NY/ NJ Harbor Estuary Program, Riteway Tree Care
- **Partners:** Friends of Gateway, Gateway National Recreation Area, Federated Employment and Guidance Service, Floyd Bennett Gardeners Association, Gateway Environmental Study Center, Jamaica Bay Watershed Alliance, NYC Department of Education, Outward Bound, Young Adult Institute.
- **Teammates:** American Express, Backyard Community Garden, Boy Scouts of America, Council on the Environment, Educators for Gateway, NYC Sierra Club, Neighborhood Open Space Coalition, Take a Walk, New York!
- **Volunteers:** Hundreds of dedicated, temporarily dirtier friends who have given their time in return for a few hours of healthy physical activity.
- **Friends of Gateway – 232 E 11 Street, NY NY 10003 – 212-228-3126**

# To schedule your class or group:

Friends of Gateway – 232 E 11 Street, NY NY 10003 – 212-228-3126



A fisher at Floyd Bennett Field finds his way to Jamaica Bay at dawn.